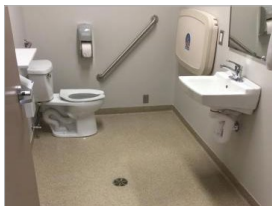
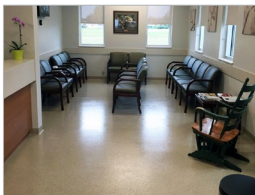


HERMETIC™ 4.8S Urethane Cement Slurry



CSI Division 9: Flooring - Fluid Applied

elite crete systems

Engineered High Performance Surfaces & Flooring

HERMETIC™ 4.8S Urethane Cement Slurry

is a three component, thermal shock resistant, urethane slurry (broadcast optional), non-slip flooring system. Available in a variety of colors and engineered to be FDA and USDA acceptable for applications in food manufacturing, packaging and serving facilities.

HERMETIC™ 4.8S Urethane Cement slurry is engineered to withstand steam cleaning on a daily basis, along with it's resistance to bacterial growth makes it ideal for application in most food and beverage manufacturing and serving facilities. Non-slip when wet, will withstand severe traffic exposure.

TYPICAL AREAS OF USE

- Meat/Poultry & Dairy Processing
- Breweries & wineries
- Pharmaceutical Plants
- Commercial Kitchens & Restaurants
- Processing Areas
- Automotive Service Bays
- Cold storage facilities

ADVANTAGES

- Resistant to extreme hot and cold changes in temperature
- Passes ADA recommendations
- Meets or exceeds FDA AND USDA guidelines
- Does not support bacterial growth
- Resistant to high levels of relative humidity in substrates
- Self-leveling, water based, & VOC compliant formulation
- CA 01350 indoor air quality compliant
- Does not contain phthalates

SPECIFICATION OVERVIEW

- Name: HERMETIC™ 4.8S Urethane Cement slurry
- Finish: High gloss or satin
- Cured Thickness; 3/16" to 5/8"
- Surface preparation and detailed application see manufacturers instructions
- Manufacturer Elite Crete Systems, Inc. +1-219 465-7671

SAMPLE COLOR CHART



For integral color and decorative quartz options, contact a technical representative.

NOTE: The colors depicted on this technical document may not illustrate the exact color. Contact a technical support representative for a more accurate color sample. Custom colors available upon request.

PHYSICAL PROPERTIES

(@ 73°F / 23°C, 7 day ambient cure as a coating)

Mix Ratio: Pre-Engineered 3 part unit

Gel Time: 14 minutes

Consistency: Gage rake slurry

PROPERTY	TEST	RESULT
VOC Content	N/A	0 g/l
Shore D Hardness	ASTM D-2240	80-85
Compressive Strength	ASTM C-579	12,800 psi
Tensile Strength	ASTM D-638	4,400 psi
Flexural Strength	ASTM D-790	6,300 psi
Adhesion	ASTM D-4541	>400 (100% concrete failure)
Impact Resistance	ASTM D-2794	Pass
Abrasion Resistance *	ASTM D-4060	2 mg loss
Thermal Shock Resistance	MIL F-52505	Pass (230F) Force Hot Steam
Flammability	ASTM E-648	Class 1
Indoor Air Quality	CA-01350	Compliant
Coefficient of Friction	ASTM D-2047	0.9 (Passes ADA recommendation)

* CS-17 Wheel, 1 KG load, 1,000 cycles



elite crete systems

Elite Crete Systems, Inc.

1151 Transport Drive
Valparaiso, Indiana 46383

Phone: +1.219.465.7671 Fax: +1.219.531.0898

Toll Free: 888-323-4445

Email: info@elitecrete.com

www.elitecrete.com

The information herein is general information to assist our customers in determining whether our products are suitable for their specific applications. Our products are intended for sale to commercial and industrial customers. We require that customers should inspect and test our products before use to satisfy themselves as to the content and suitability for the applications they intend to use our products for. Nothing herein shall constitute any warranty expressed or implied, including any warranty of merchantability or fitness for a particular purpose, nor is replacement of our materials and in no event shall we be liable for incidental or consequential damages.